

PG1-B ABC

Cartridge
operated

Powder

1 kg

BODY

ALUMINUM

Seamless, deep and drawn aluminum alloy body, ensures maximum sealing and, thanks to its light weight, perfect handling. Externally painted with polyester resin.

VALVE

ACETALYC RESIN

Squeeze grip lever operated valve with acetal resin body, ensuring perfect protection against corrosion. All external parts are either in plastic material or protected against corrosion

CARTRIDGE

Disposable CO2 cartridge, deep drawn without welds, externally protected by zinc coating and passivation. Cartridge housed in the dip tube.

EXTINGUISHING AGENT

ABC multi-purpose dry extinguishing powder, certified according to EN 615.

PACKAGING

6 pieces cardboard box, robust and suitable for transport.

ANAFGROUP

Temperature ranges

-30°C + 60°C



On Request



5








34



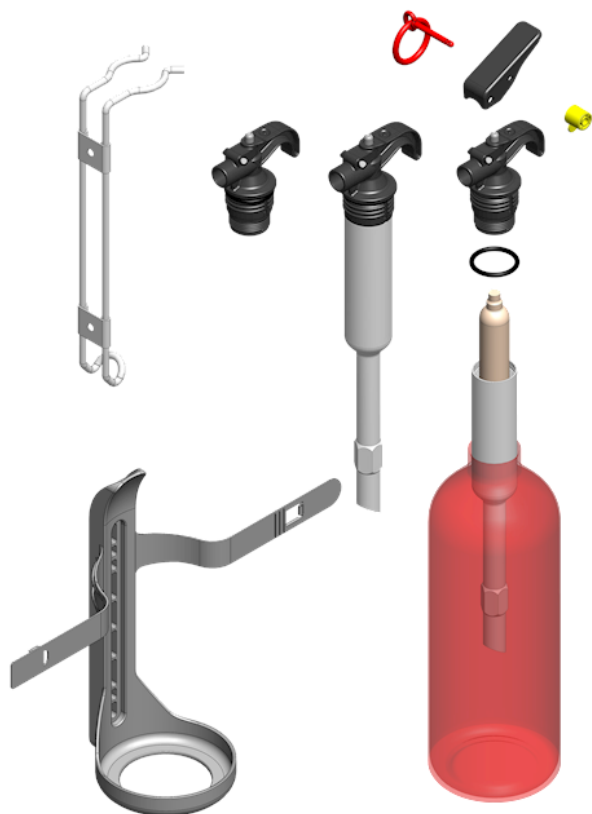
✓



Configuration	<input checked="" type="radio"/> Standard <input type="radio"/> On request	
BRACKET	<input type="radio"/> Metal bracket 	<input checked="" type="radio"/> Bracket 
PACKAGING	<input type="radio"/> One-piece pre-formed box 1 PZ. PS2-Y 	<input checked="" type="radio"/> One-piece white cardboard box 
ADDITIONAL FEATURES	<input type="radio"/> Two color screen printing 	

Technical data

FIRE RATINGS	5A 34B C	
CHARGE	1 kg ± 5%	
MATERIAL	Aluminum	
CYLINDER	Manufacturing process	Deep Drawing
	External painting	Polyester Resin
	Corrosion resistance	480H
EXTINGUISHING AGENT	ABC POWDER A32	
PROPELLANT	CO2	
DISCHARGE	Discharge time	~ 7.5 s
	Operating pressure at 60 °C	11 bar
	Operating pressure at 20 °C	9 bar
PRESSURE	Operating pressure at -30 °C	6 bar
	Overall height	298 mm
	Bottle outer diameter	82 mm
WEIGHT	Empty / Charged	0.38 kg / 1.38 kg
PACKING SPECIFICATIONS	Standard packing	6 Pieces cardboard box
	Carton size (B x L x H)	288 x 195 x 320 mm
	Weight per carton	8.52 kg
	Pallet	90 Cartons
	Pallet size (B x L x H)	800 x 1200 x 1745 mm
	Pallet volume	1.68 m3
	Weight per pallet (net/gross)	767 kg / 787 kg



Spare parts list

Description	Code
11G PGI NTG CARTRIDGE	00.021A.3900.10K0
DIP TUBE	00.039A.5900.00K0
VALVE WITHOUT CARTRIDGE AND DEEP-TUBE	00.039A.8505.01K0
VALVE COMPLETE	00.039A.8505.40K0
METAL BRACKET	00.205A.2900.10K0
BRACKET	00.652A.2910.00K0
O-RING 25.00 X 3.00	00.652A.5010.00K0
SAFETY PIN	00.652A.5020.00K0
SEAL	00.652A.5030.VEK0
BLACK LEVER	00.652A.6050.00K0