

PS9-HJ ABC

Stored pressure

Powder

9 kg

Temperature ranges

-30° + 60°



On Request

BODY

STEEL

Deep drawn 2-pieces mild steel cylinder, wire feed welded. Externally painted with polyester resin.

VALVE

ACETALYC RESIN

Squeeze grip lever operated valve with acetal resin body, ensuring perfect protection against corrosion. The shock-proof pressure gauge is equipped with a non-return valve to allow pressure control and with a sintered filter to protect sensitive parts.

EXTINGUISHING AGENT

ABC multi-purpose dry extinguishing powder, certified according to EN 615.

PROPELLANT

The propellant gas is nitrogen. A small percentage of helium is added to allow electronic leak detection.

HOSE/HORN

The EPDM reinforced rubber hose guarantees perfect flexibility and resistance within the temperature range. Complete with nozzle.

PACKAGING

Single piece cardboard box, robust and suitable for transport.

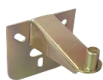


Configuration

● Standard

○ On request

BRACKET



○ Button holed wall bracket



○ TRASPORT BRACKET PS9-H

HOSE RINGS & PROTECTIVE BASE



○ Protective base 9KG Ø190 black



○ Button holed wall bracket



○ PORTASUPPORTO VALV.J C/DADO S/VITE



○ Hose holder DI90 black

PACKAGING



○ CARDBOARD BOX 9KG DI90

Technical data

| | | |
|------------------------|-------------------------------|-----------------------------|
| FIRE RATINGS | 43A 233B C | |
| CHARGE | 9 kg ±2% | |
| MATERIAL | STEEL | |
| CYLINDER | Manufacturing process | Deep Drawing |
| | External painting | Polyester Resin |
| | Corrosion resistance | 480 H SECONDO ISO 9227:2017 |
| EXTINGUISHING AGENT | ABC POWDER A32 | |
| PROPELLANT | N2 + HE | |
| DISCHARGE | Discharge time | ~ 20 s |
| PRESSURE | Operating pressure at 60 °C | 15 bar |
| | Operating pressure at 20 °C | 13 bar |
| | Operating pressure at -30 °C | 11 bar |
| DIMENSIONS | Overall height | 540 mm |
| | Bottle outer diameter | 190 mm |
| WEIGHT | Empty / Charged | 3.73 kg / 12.73 kg |
| PACKING SPECIFICATIONS | Standard packing | 1 Pieces cardboard box |
| | Carton size (B x L x H) | 200 x 200 x 600 mm |
| | Weight per carton | 13.3 kg |
| | Pallet | 48 Cartons |
| | Pallet size (B x L x H) | 800 x 1200 x 1440 mm |
| | Pallet volume | 1.44 m3 |
| | Weight per pallet (net/gross) | 638 kg / 658 kg |



Spare parts list

| Description | Code |
|--|-------------------|
| BUTTON HOLED WALL BRACKET | 00.005E.2900.00K0 |
| WALL BRACKET | 00.005E.2950.00K0 |
| O-RING VALVE 29.74 x 2.95 | 00.033E.1100.01K0 |
| TRANSPORT BRACKET | 00.241F.2900.00K0 |
| PRESSURE GAUGE | 00.245E.4951.10K0 |
| BASE Ø190 | 00.265F.2100.00K0 |
| SCHRADER VALVE | 00.600A.5100.00K0 |
| SEAL | 00.652A.5030.VEK0 |
| WALL BRACKET | 00.752B.2900.10K0 |
| SUPPORT DE LANCE | 00.850E.2955.20K0 |
| RED LEVEL | 00.850E.5100.10K0 |
| SAFETY PIN | 00.850E.5300.00K0 |
| VALVE ASSEMBLY WITHOUT PRESSURE GAUGE WITH LEVEL | 00.850E.8505.00K0 |
| Hose | 00.890F.2400.05K0 |
| DIP TUBE | 00.890F.5900.00K0 |
| HOSE HOLDER Ø190 | 00.895F.2800.00K0 |